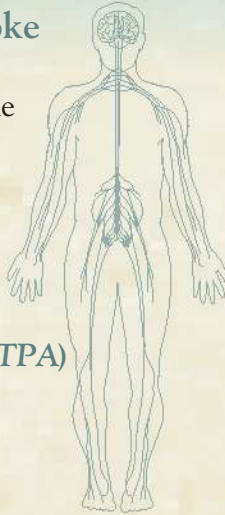


## Acute Interventional Stroke Treatment

Patients who present with stroke symptoms can benefit from the biplane hybrid OR suite under specific conditions contingent on onset of symptoms & interventional criteria.



## Intra-Arterial Thrombolytic (TPA)

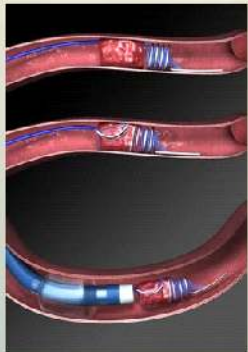
- Therapy delivered in lower doses at site of occlusion

## Mechanical Thrombolysis

- Mechanical disruption of clot using microwires at site of occlusion
- Improves efficacy of thrombolytics

## Mechanical Thrombectomy

- Removal of clot using a mechanical device



## Merci Retrieval (pictured)

- FDA approved Merci retrieval system is changing treatment paradigm
- Used to remove clot from large intracranial vessels (ICA, MCA, Basilar)

- Effective in treating “hard” clots
- Embolic organized clots
- Embolic atherosclerotic plaque

## Summary of Biplane Services at MCCG

- Diagnostic cerebral angiography
- Diagnostic testing
- Kyphoplasty
- Acute stroke therapy
- Intra-arterial tPA
- Petrosal sinus sampling, WADA
- Aneurysm treatment
- Arteriovenous malformation multimodal therapy
- Arteriovenous fistula repair
- Carotid occlusive disease
- Intracranial occlusive disease
- Cerebral arteriogram
- Transphenoidal surgery

## Biplane Hybrid OR Advantages

- Expert interventional stroke treatment
- Unique Hybrid Neurovascular Operating Room and Interventional Suite
- The most state-of-the-art biplane angiography suite in the Southeast
- Ability to go “open” if necessary



The Medical Center  
of Central Georgia

777 Hemlock Street  
Macon, Georgia 31201

Call 478-633-1007 for more information

[mccg.org](http://mccg.org)



The Georgia Neuro Center at The Medical Center of Central Georgia is pleased to announce the Southeast's only hybrid neurovascular operating room

# BIPLANE IMAGING SURGICAL SUITE



Endovascular Treatment  
for Stroke & Vascular  
Disease

RIGHT WHERE YOU NEED IT!

## Endovascular Neurosurgery

Also known as Interventional Neuroradiology, Endovascular Neurosurgery involves treatment of brain vascular disease through the blood vessels using real time digital subtraction angiography



## Biplane Hybrid OR features

Traditionally, open-surgical procedures have been performed in the operating room and neuro-interventional (*endovascular*) procedures have been performed in a radiology suite

*Biplane Hybrid OR suite at The Medical Center of Central Georgia is both a traditional OR and endovascular suite.*

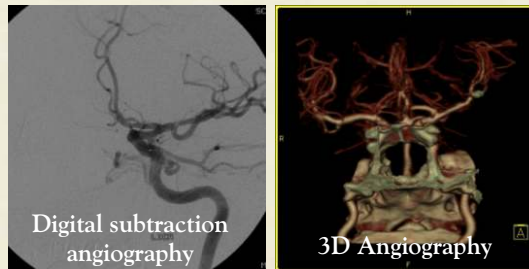
### Suite advantages

- CT scanner built into unit allowing for evaluation of potential complications without delay
- A surgeon can convert case to open procedure, requiring only one anesthesia incident (*instead of two*)
- Potentially life-saving, the hybrid room allows immediate diagnosis and emergent surgical treatment of the most common endovascular complication, intracerebral hemorrhage
- Only hybrid neurovascular OR/ Interventional suite in Southeast
- **One of four in the world**

## Diagnostic Cerebral Angiography

Three dimensional angiography enables surgeons to treat vascular disease while an invasive diagnostic procedure is performed.

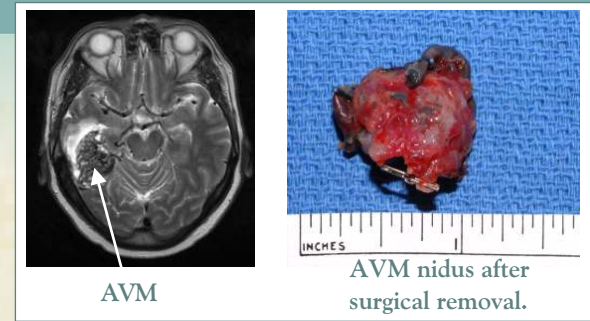
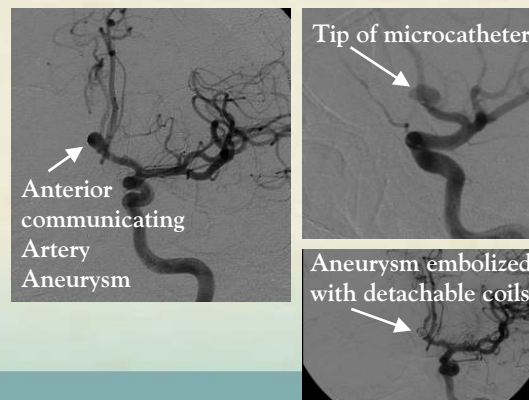
- WADA and Super-selective WADA testing
- Petrosal Venous Sinus sampling



## Endovascular treatment of aneurysms

The Biplane Hybrid OR suite offers a *minimally invasive* technique of occluding aneurysms with detachable platinum coils released from a small catheter within the artery.

- Applicable to roughly 60% of cases
- Low morbidity
- Overnight hospital stay for elective cases
- Stent-assisted coiling is expanding treatment to more aneurysms
- Requires two follow-up cerebral angiograms over a two-year period



## Arteriovenous Malformation (AVM)

The following AVM treatment options are available:

### Open surgical resection

- For small non-eloquent lesions
- In combination with pre-operative embolization for large non-eloquent lesions

### Embolization

- Done prior to surgical resection to lower operative morbidity
- 10–20% of AVMs can be cured with embolization alone using newer agents
- Used to reduce AVM size prior to radiosurgery

### Radiosurgery

- Small (<3 cm) critically located lesions
- Three year follow-up required to determine success of treatment
- 15–25% failure rate; Risk of hemorrhage during latency period

## Stenting Treatments

The following stenting treatments can be performed in the Biplane Hybrid OR Suite:

- Carotid stenting
- Intracranial atherosclerotic disease
- Intracranial balloon angioplasty and stenting
- Wingspan Stent and Gateway Balloon

